

# W-977 Wheel Balancer Parts Manual 17



# WEAVER

E Q U I P M E N T

Please read this manual before operation

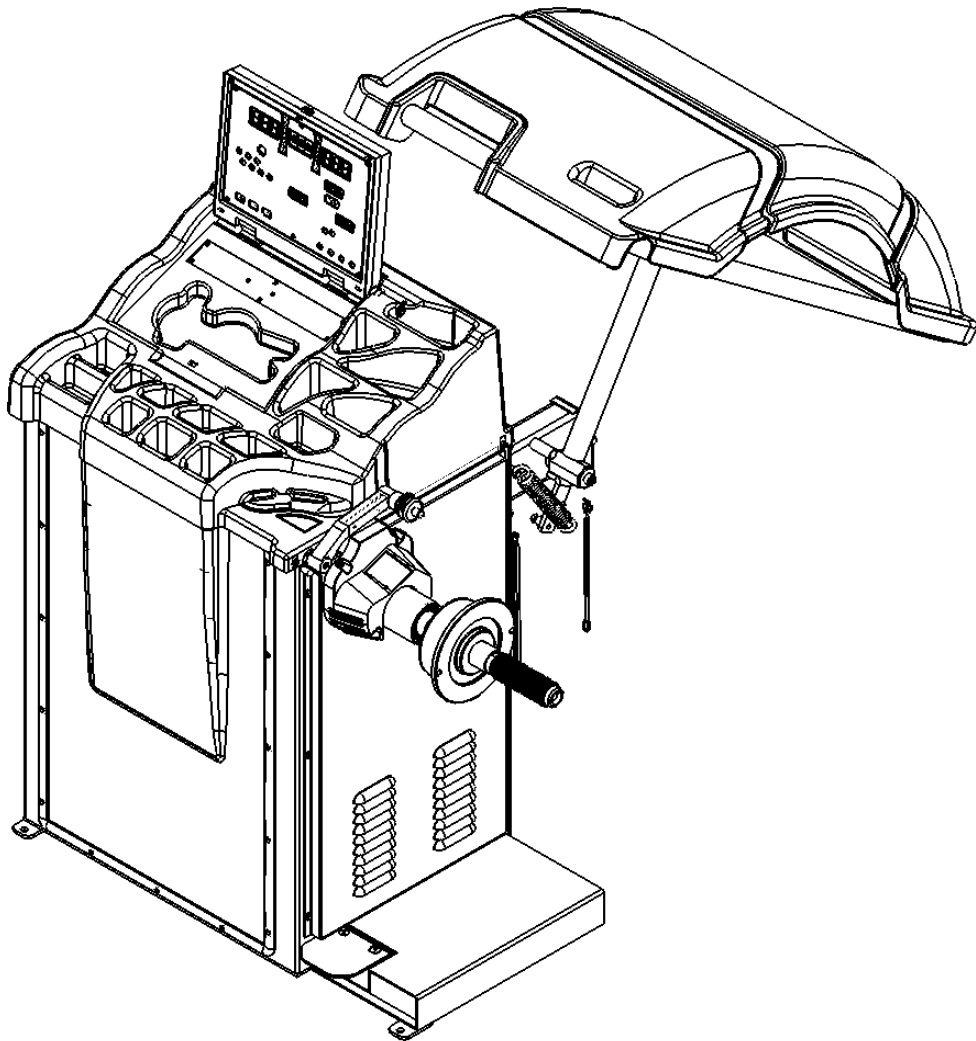
---

# WHEEL BALANCER

---

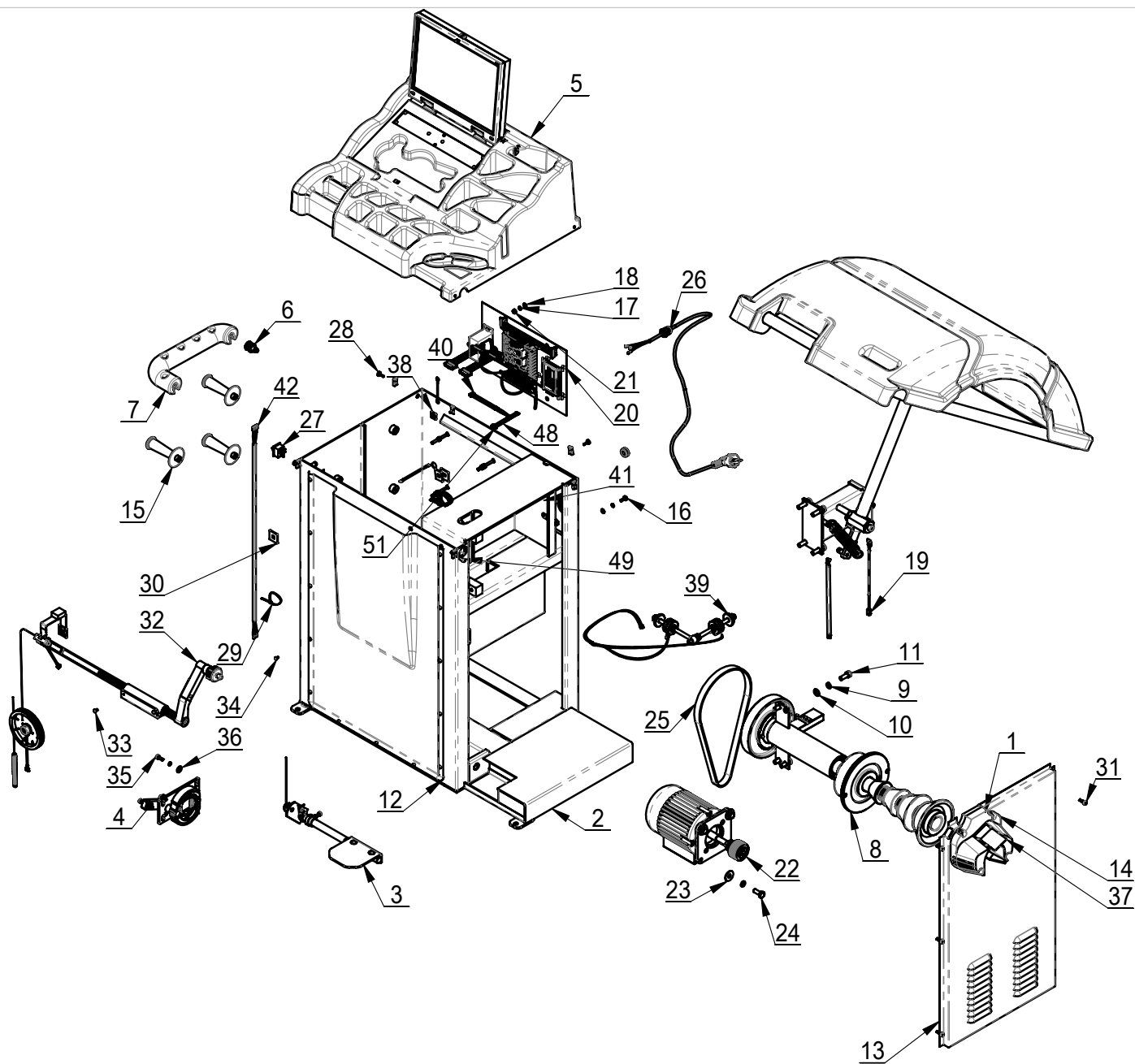
## W-977

---



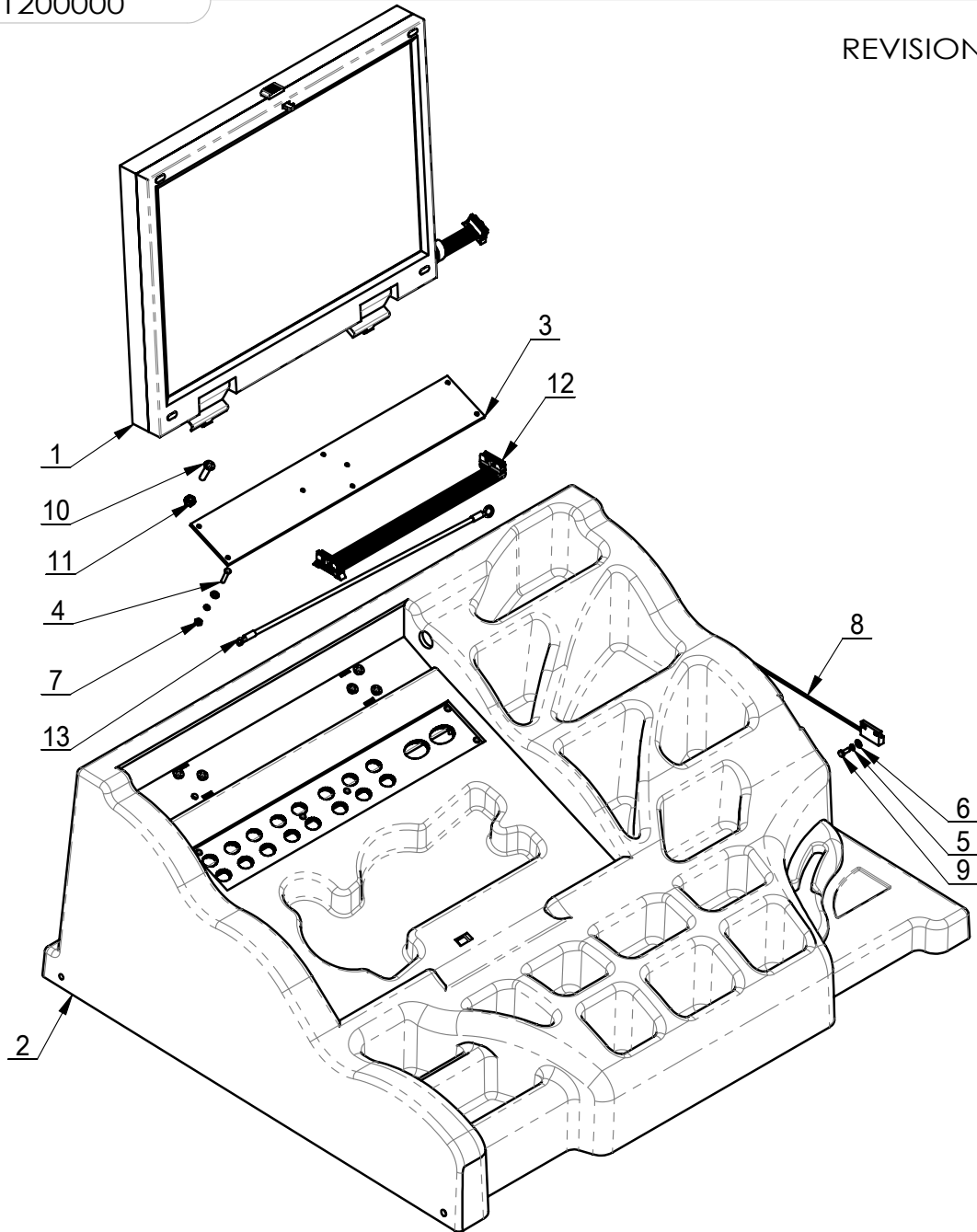
---

List of Components

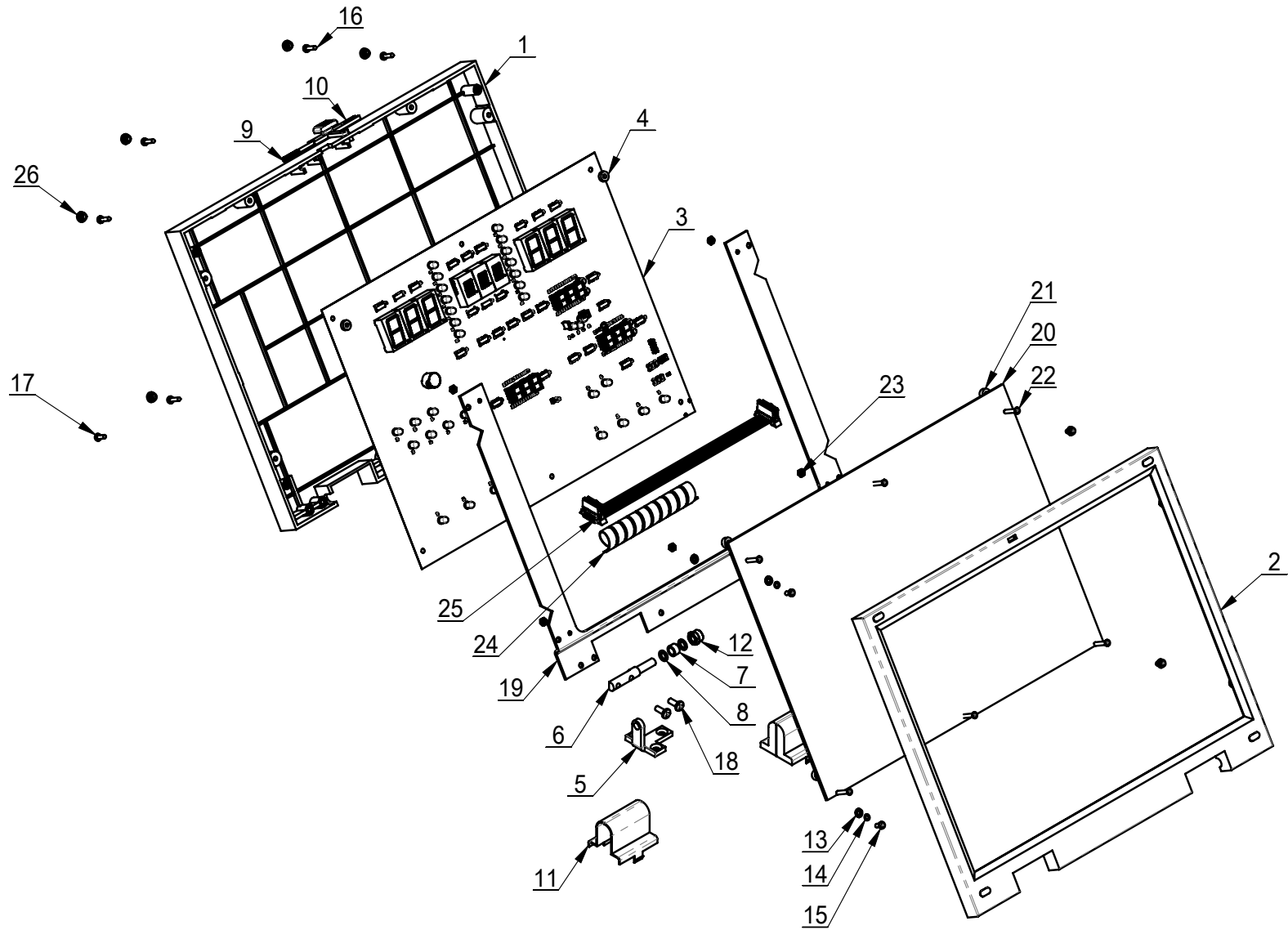


ITEM	PART.No	DESCRIPTION.	QT.Y
1	B-53-1000007	NUT M4	10
2	B-56-1100000	BODY	1
3	B-56-1300000	PEDAL ASSEMBLY	1
4	B-56-1400000	BRAKE ASSEMBLY	1
5	B-56-1200000	WEIGHT TRAY ASSEMBLY	1
6	B-56-1000002	TOOL SHELF CONNECTION BUTTON	2
7	B-56-1000001	TOOL SHELF	1
8	TB-P-0300000	SHAFT ASSEMBLY	1
9	GB93-10	STANDARD SPRING WASHER	8
10	GB95-10	FLAT WASHER	4
11	GB70.1-M10×25	INNER HEXA CYLINDRICAL SCREW	4
12	B-56-1000003	FRONT COVER	1
13	B-56-1000004	SIDE SEALING PANEL	1
14	B-56-1000005	MAIN SHAFT COVER	1
15	TB-S-0100009	CONE HANG HANDLE	5
16	GB818-M6×16-H	CROSS PANHEAD SCREW	1
17	GB93-6	STANDARD SPRING WASHER	9
18	GB95-6	FLAT WASHER	5
19	TB-F-0300000	HOOD ASSEMBLY	1
20	B-56-1500000-002	ELECTRICAL QUIPMENT BOARD	1
21	GB6170-M6	HEXANGULAR NUT 1-TYPE	8
22	TB-E-9001110	MOTOR ASSEMBLY PART	1
23	GB96.1-10	LARGE WASHER A GRADE	4
24	GB5781-M10×25	HEXANGULAR BOLT	4
25	B-01-1000006	WEDGE BELT(940mm)	1
26	TB-E-1000100	POWER CABLE ASSEMBLY	1
27	TB-E-1001101	POWER SWITCH	1
28	B-53-1000006	SCREW M4	10
29	B-53-1000009	NYLON BELT	4
30	B-53-1000008	FIX PLATE	4
31	GB15856.4-ST5.5×19	HEXA FLANGE TAPPING SCREW	6
32	TB-L-0300000	SCALE ASSEMBLY	1
33	GB819.1-M5×10-H	CROSS COUNTERSUNK SCREW STEEL 4.8 GRADE	2
34	GB818-M4×8-H	CROSS PANHEAD SCREW	13
35	GB70.1-M6×16	INNER HEXA CYLINDRICAL SCREW	4
36	GB96.1-6	LARGE WASHER A GRADE	4
37	B-56-1000006	LENS	1
38	C-54-1000015	STOP-UP	1
39	TB-P-0303000	PRESS SENSOR ASSEMBLY	1
40	B-56-1000012	OPTICBACKPANEL CABLE	1

ITEM	PART.No	DESCRIPTION.	QT.Y	
41	C-71-1000019	RUBBER GROMMET	1	
42	B-01-1008001	SWITCH CONNECTION LINE	1	
43	C-70-1200009	PLUG	1	
44	B-53-1000012	POWER SWITCH CABLE	1	
45	B-56-1000009	DISPLAY PANEL CABLE	1	
46	B-56-1000010	KEY BOARD CABLE	1	
47	B-56-1000011	PE CABLE	1	
48	B-56-1000012	PHOTOELECTRICITY CABLE	1	
49	TB-L-0600006	HANDLE	1	



ITEM	PART.No	DESCRIPTION.	QT.Y
1	B-56-1210000	PANEL CONTROL DESK COVER	1
2	B-56-1200002	CB958WEIGHT TRAY	1
3	B-56-1200001	KEY BOARD	1
4	GB819.1-M3×16-H	CROSS COUNTERSUNK SCREW STEEL 4.8 GRADE	6
5	GB93-3	STANDARD SPRING WASHER	7
6	GB95-3	FLAT WASHER	7
7	GB6170-M3	HEXANGULAR NUT 1-TYPE	6
8	B-53-1000010	MAGNETIC SWITCH	1
9	GB818-M3×8-H	CROSS PANHEAD SCREW	1
10	GB819.1-M5×20-H	CROSS COUNTERSUNK SCREW STEEL 4.8 GRADE	6
11	GB6170-M5	HEXANGULAR NUT 1-TYPE	6
12	B-56-1000010	KEYBOARD PLATE	1
13	B-56-1000011	GROUND LINE	1



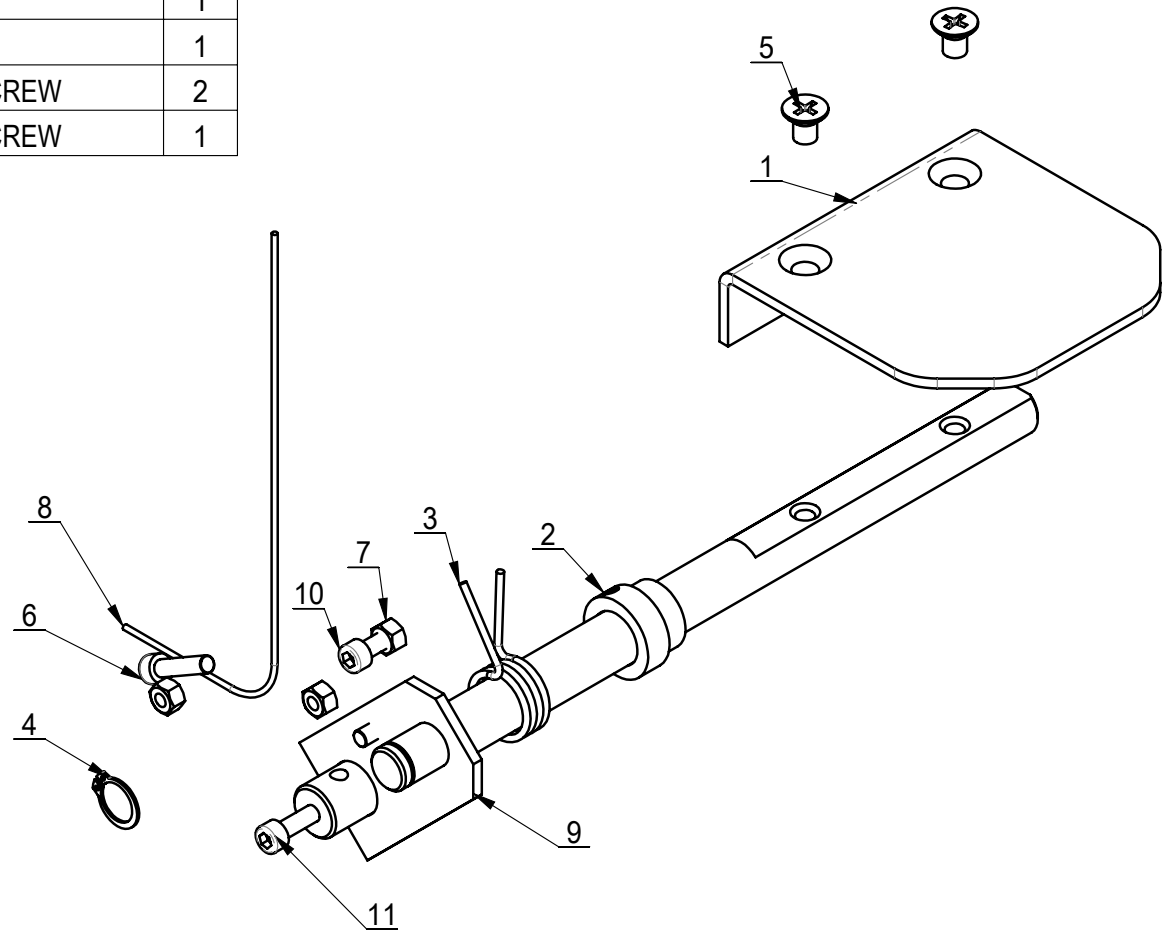
ITEM	PART.No	DESCRIPTION.	QT.Y
1	B-56-1210100	A COVER	1
2	B-56-1210200	B CASE	1
3	B-56-1210003	SHOW BOARD	1
4	B-56-1210002	DISPLAY BOARD	5
5	B-56-1210005	DISPLAY STEEL SUPPORT	2
6	B-56-1210006	SREEN SHAFT	2
7	B-56-1210008	SREEN DAMP COVER	2
8	B-56-1210007	WASHER	4
9	B-56-1210009	SREEN FIXTURE SPRING	1
10	B-56-1210010	DISPLAY HOOK	1
11	B-56-1210011	SCREEN COVER	2
12	GB889.1-M6	1-TYPE PREVAILING TORQUE TYPE HEXAGON LOCK NUT	2
13	GB95-3	FLAT WASHER	10
14	GB93-3	STANDARD SPRING WASHER	10
15	GB818-M3×6-H	CROSS PANHEAD SCREW	4
16	GB845-ST2.9×13 H C	CROSS PANHEAD TAPPING SCREW	6
17	GB818-M3×8-H	CROSS PANHEAD SCREW	2
18	GB818-M4×10-H	CROSS PANHEAD SCREW	4
19	B-56-1210001	SHOW FRAME	1
20	B-56-1210004	PAD PILLAR	1
21	B-12-1210005	WASHER	4
22	GB819.1-M3×16-H	CROSS COUNTERSUNK SCREW STEEL 4.8 GRADE	6
23	GB6170-M3	HEXANGULAR NUT 1-TYPE	6
24	B-56-1210016	SHIELD	1
25	B-56-1210012	SHOW BOARD LINE	1
26	B-56-1210014	OMAMENT COVER	8

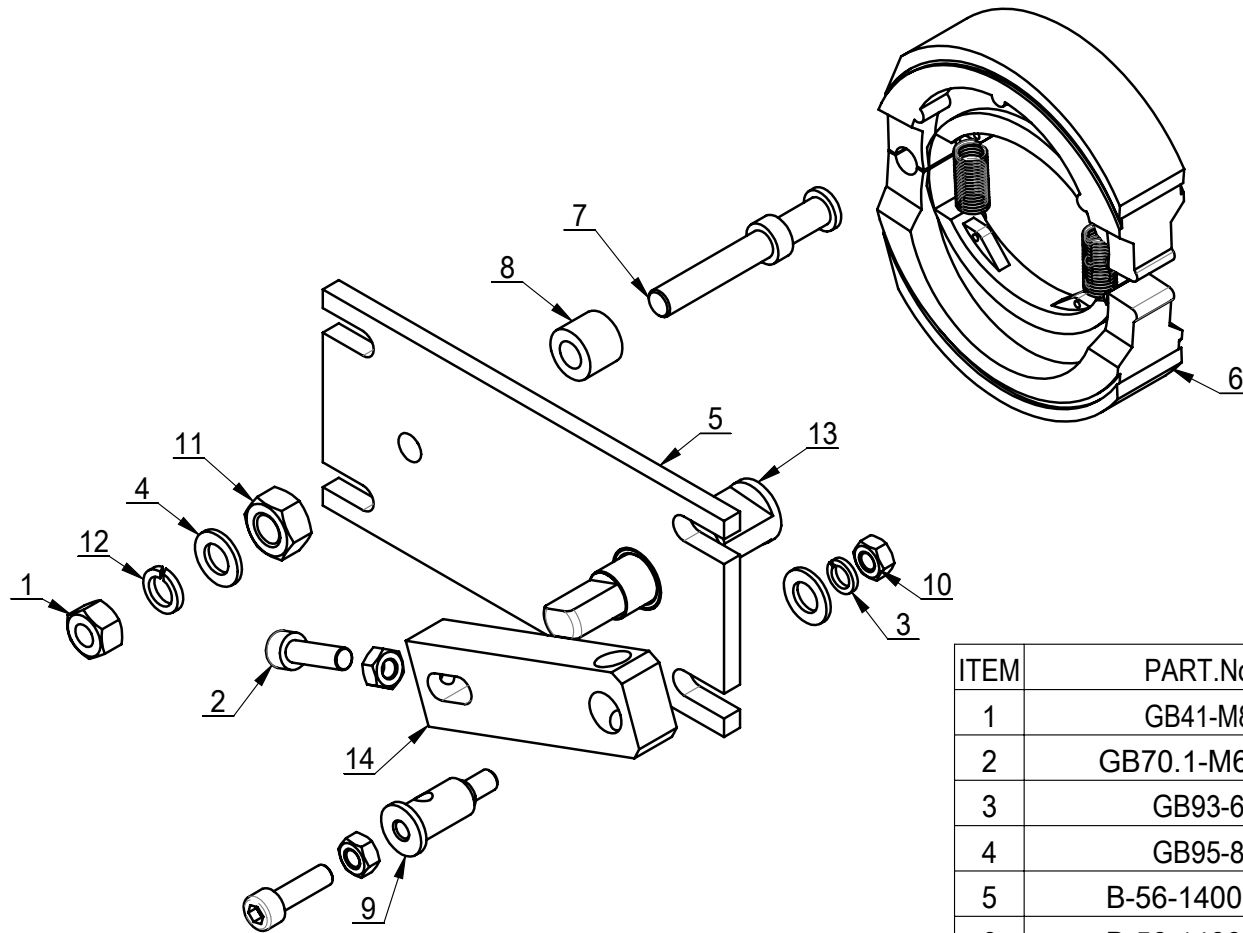


REVISION A-01

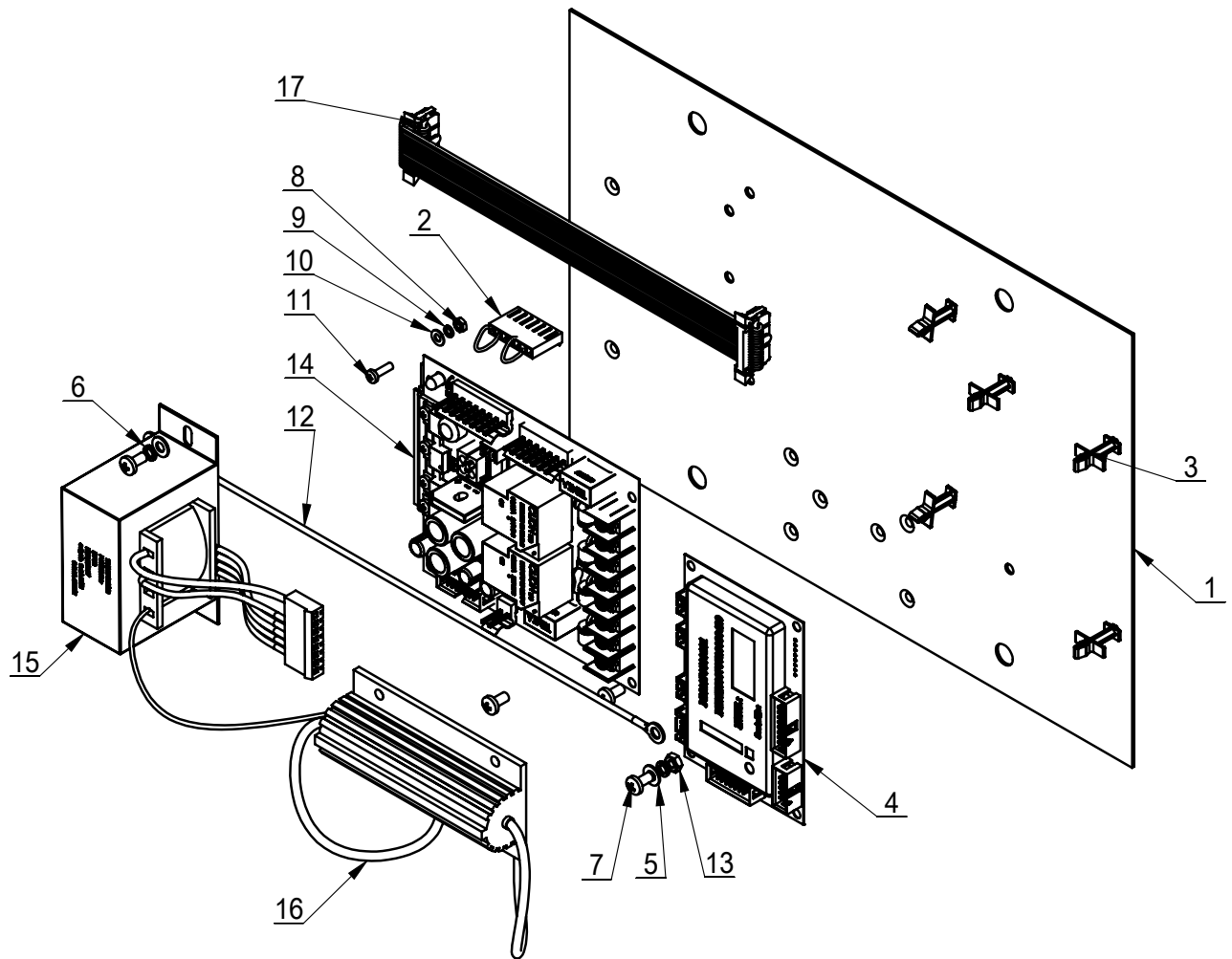
B-56-1300000

ITEM	PART.No	DESCRIPTION.	QT.Y
1	B-56-1300001	PEDAL	1
2	B-56-1300002	TIGHT BUSHING	1
3	B-56-1300003	TORSION SPRING	1
4	GB894.1-16	SHAFT ELATIC BIG RETAINING RING A-TYPE	1
5	GB819.1-M8×12-H	CROSS COUNTERSUNK SCREW STEEL 4.8 GRADE	2
6	GB70.1-M6×25	INNER HEXA CYLINDRICAL SCREW	1
7	GB41-M6	HEXANGULAR NUT	4
8	B-56-1300004	STEEL WIRE	1
9	B-56-1300100	SPIALE ASSEMBLY	1
10	GB70.1-M6×16	INNER HEXA CYLINDRICAL SCREW	2
11	GB70.1-M6×30	INNER HEXA CYLINDRICAL SCREW	1

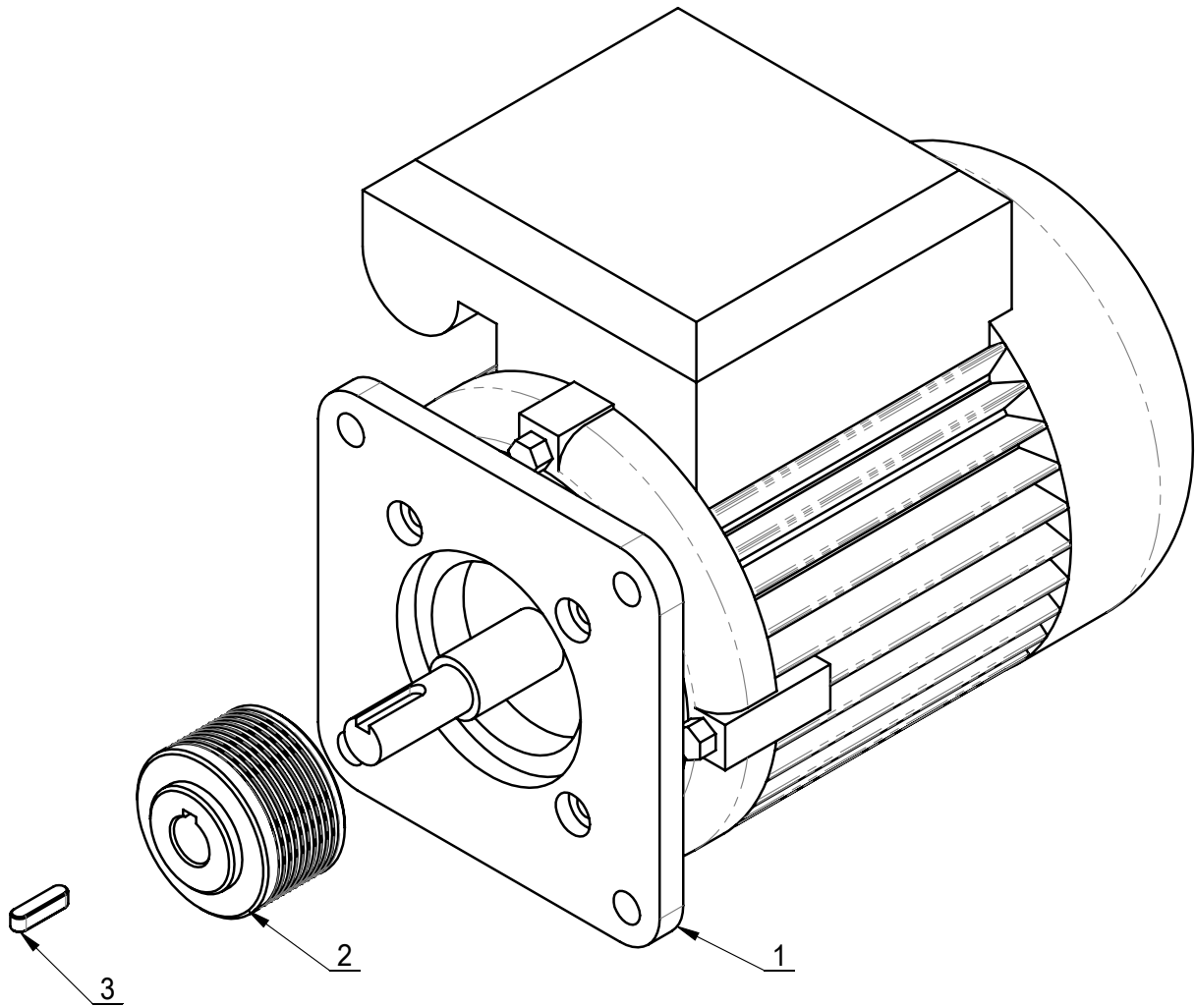




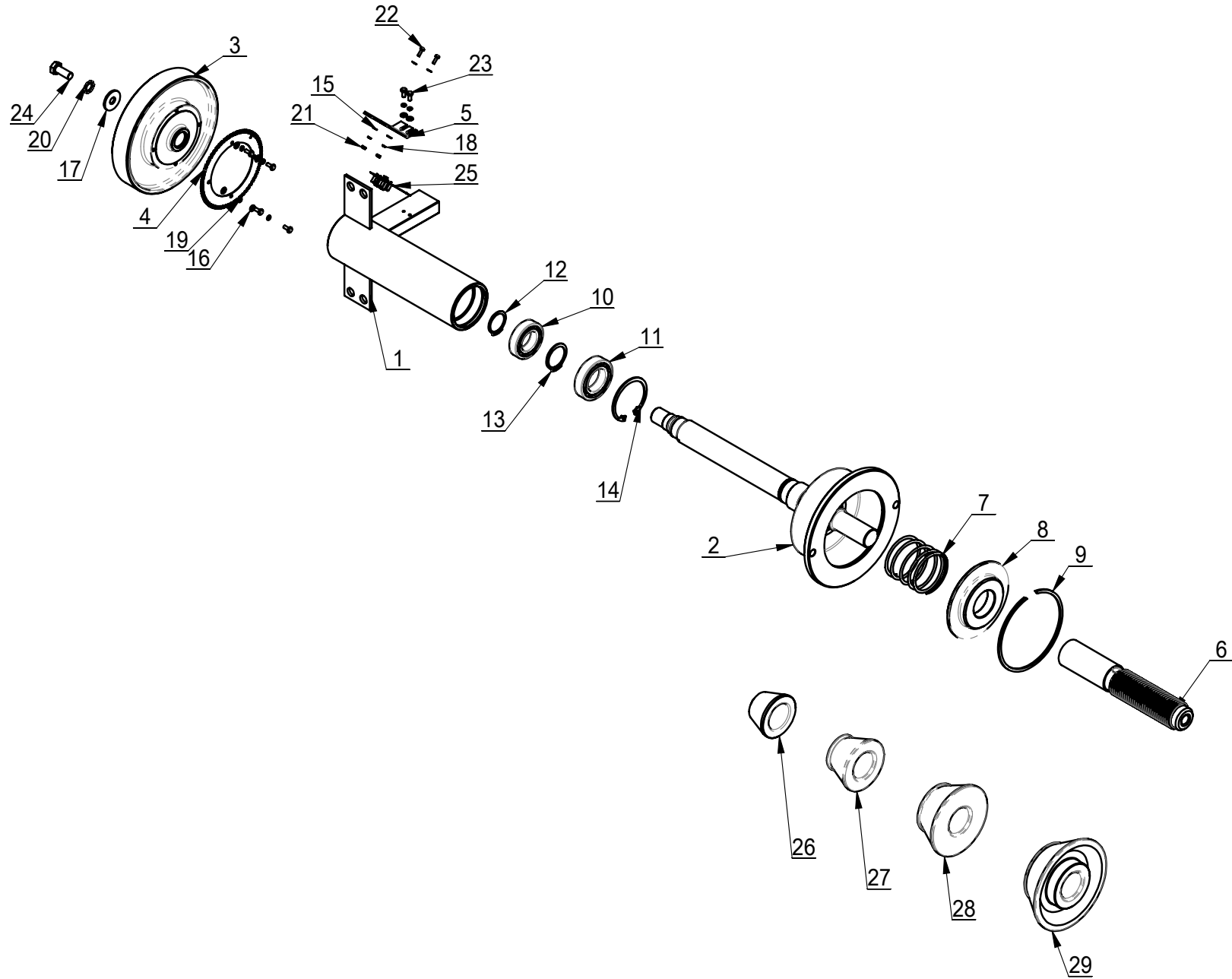
ITEM	PART.No	DESCRIPTION.	QT.Y
1	GB41-M8	HEXANGULAR NUT	1
2	GB70.1-M6×20	INNER HEXA CYLINDRICAL SCREW	2
3	GB93-6	STANDARD SPRING WASHER	1
4	GB95-8	FLAT WASHER	2
5	B-56-1400100	BRAKE SPANNER	1
6	B-56-1400200	BRAKE	1
7	B-56-1400001	SCREW	1
8	B-56-1400002	WASHER	1
9	B-56-1400003	FIX SHAFT	1
10	GB6170-M6	HEXANGULAR NUT 1-TYPE	3
11	GB6170-M10	HEXANGULAR NUT 1-TYPE	1
12	GB93-8	STANDARD SPRING WASHER	1
13	B-56-1400005	STOP SHAFT	1
14	B-56-1400007	AWINGING ARM	1



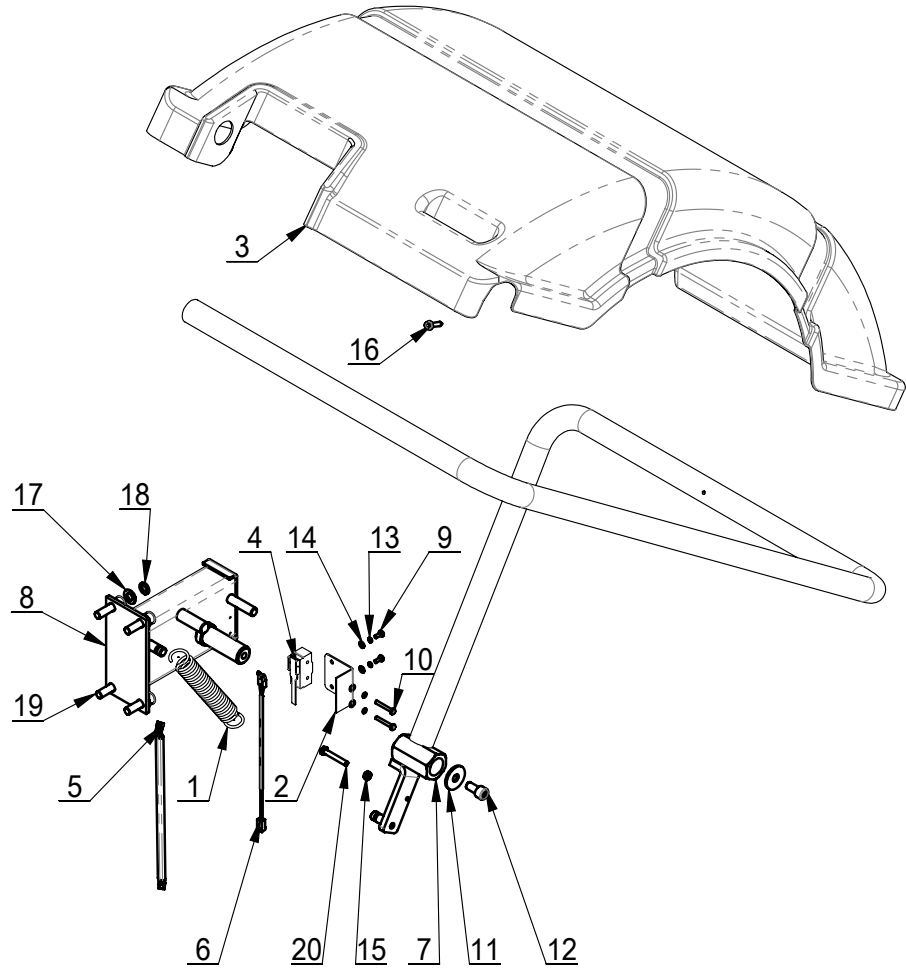
ITEM	PART.No	DESCRIPTION.	QT.Y
1	B-56-1500101	ELECTRIC INSTALLATION BOARD	1
2	TB-E-1006004	JUMPER No4	1
3	TB-E-1211002	PLASTIC CLIPPER	5
4	B-56-1500001	CB956 CPU	1
5	GB95-4	FLAT WASHER	3
6	GB93-4	STANDARD SPRING WASHER	3
7	GB818-M4×8-H	CROSS PANHEAD SCREW	5
8	GB6170-M3	HEXANGULAR NUT 1-TYPE	2
9	GB93-3	STANDARD SPRING WASHER	2
10	GB95-3	FLAT WASHER	2
11	GB818-M3×10-H	CROSS PANHEAD SCREW	2
12	B-56-1500105	LAND LINE	1
13	GB6170-M4	HEXANGULAR NUT 1-TYPE	1
14	B-56-1501000	POWER BOARD	1
15	TB-E-1308110	TRANSFORMER	1
16	TB-E-1211268	RESISTANCE	1
17	B-53-1000013	MOTHERBOARD CABLE	1



ITEM	PART.No	DESCRIPTION.	QT.Y
1	TB-E-9000110	MOTOR	1
2	B-53-1000003	MOTOR BELT PULLEY	1
3	GB1096-5×5×20	COMMON FLAT KEY	1



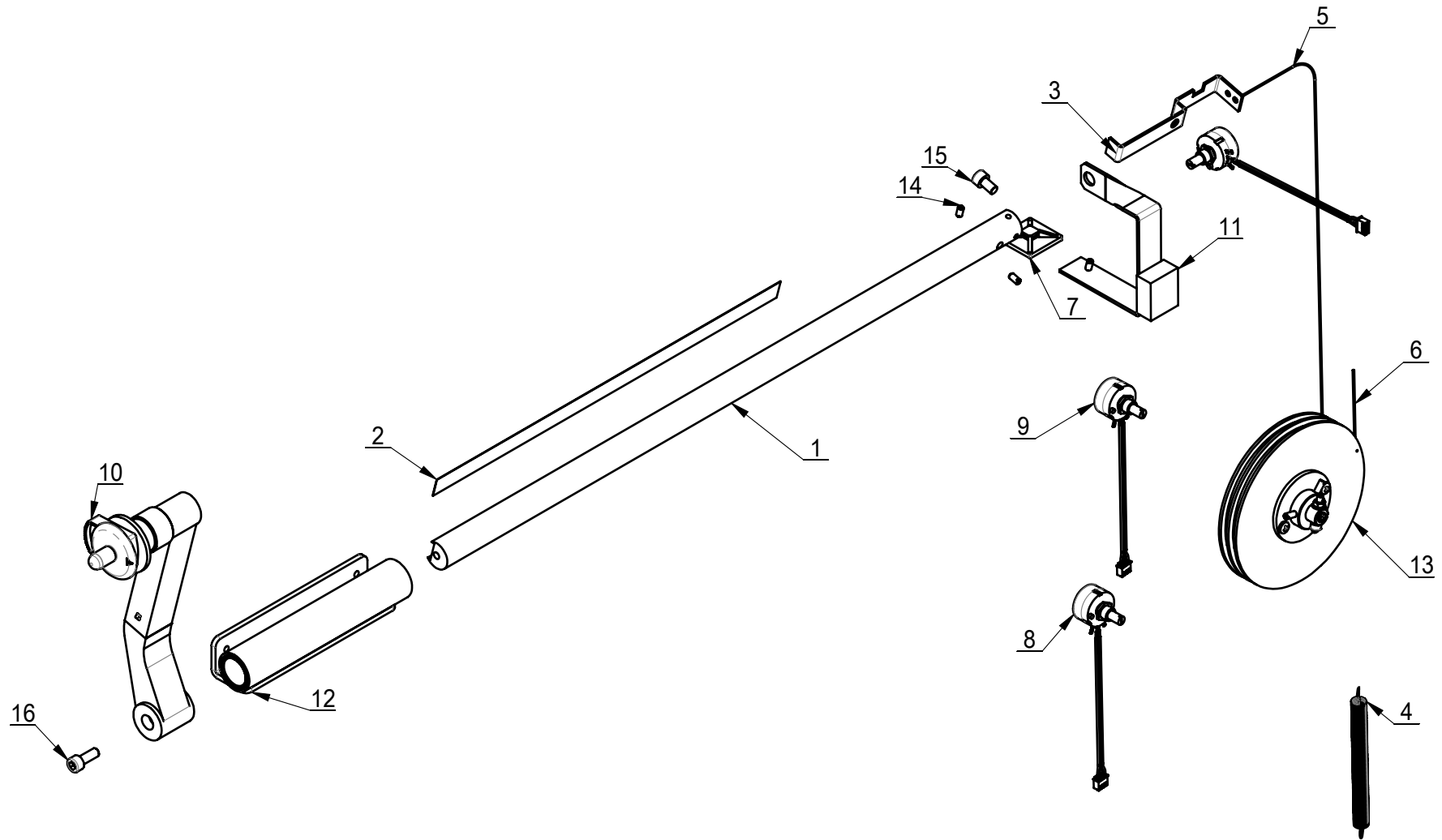
ITEM	PART.No	DESCRIPTION.	QT.Y
1	TB-P-0301000	MAIN SHAFT BUSHING	1
2	TB-P-0302000	ROTATE SHAFT ASSEMBLY	1
3	TB-P-0500001	LARGE BELT PULLEY	1
4	TB-P-0300002	PHOTOELECTRIC SET	1
5	TB-P-0300003	PHOTOELECTRIC CELL PLATE	1
6	TB-P-0300035	LEAD SCREW	1
7	TB-P-0300007	BALANCE SHAFT PRESS SPRING	1
8	TB-P-0300008	SPRING PRESS COVER	1
9	TB-P-0300009	CLAMP RING	1
10	GB276-6006	DEEP GROOVE BALL BEARINGS	1
11	GB276-6007	DEEP GROOVE BALL BEARINGS	1
12	GB894.2-30	SHAFT ELATIC RETAINING RING B-TYPE	1
13	GB894.2-35	SHAFT ELATIC RETAINING RING B-TYPE	1
14	GB893.2-62	ELASTIC RETAINING RING B-TYPE	1
15	GB95-3	FLAT WASHER	4
16	GB95-4	FLAT WASHER	6
17	GB96.1-10	LARGE WASHER A GRADE	1
18	GB93-3	STANDARD SPRING WASHER	2
19	GB93-4	STANDARD SPRING WASHER	6
20	GB862.1-10	OUTER TOOTH LOCK WAHSER	1
21	GB6170-M3	HEXANGULAR NUT 1-TYPE	2
22	GB818-M3×10-H	CROSS PANHEAD SCREW	2
23	GB818-M4×10-H	CROSS PANHEAD SCREW	6
24	GB5783-M10×25	HEXANGULAR BOLT	1
25	TB-P-0300019	photocell	1
26	TB-P-0300031	40CONE 42-65	1
27	TB-P-0300032	40CONE 54-78	1
28	TB-P-0300033	40CONE 74-108	1
29	TB-P-0300034	40CONE 89-140	1



ITEM	PART.No	DESCRIPTION.	QT.Y
1	TB-F-0100001	SUPPORT PIPE EXTENSION SPRING	1
2	TB-F-0100002	PROTECTIVE PLATE	1
3	TB-F-0100003	NEW STYLE HOOD	1
4	TB-F-0100004	HOOD SWITCH	1
5	TB-F-0100011	COVER HOOD CABLE B	1
6	TB-F-0300001	TRAVEL SWITCH CONNECTION	1
7	TB-F-0120000	PROTECTIVE HOOD SUPPORTT	1
8	TB-F-0300100	PROTECTIVE HOOD SUPPORT	1
9	GB818-M4×10-H	CROSS PANHEAD SCREW	2
10	GB818-M4×30-H	CROSS PANHEAD SCREW	2
11	GB5287-10	EXTREM LARGE WASHER C-GRADE	1
12	GB70.1-M10×20	INNER HEXA CYLINDRICAL SCREW	1
13	GB93-4	STANDARD SPRING WASHER	4
14	GB95-4	FLAT WASHER	4
15	GB6170-M6	HEXANGULAR NUT 1-TYPE	1
16	GB16824.1-ST5.5×25 C	HEXA FLANGE TAPPING SCREW	1
17	GB95-10	FLAT WASHER	4
18	GB93-10	STANDARD SPRING WASHER	4
19	GB70.1-M10×35	INNER HEXA CYLINDRICAL SCREW	4
20	GB5781-M6×40	HEXANGULAR BOLT	1

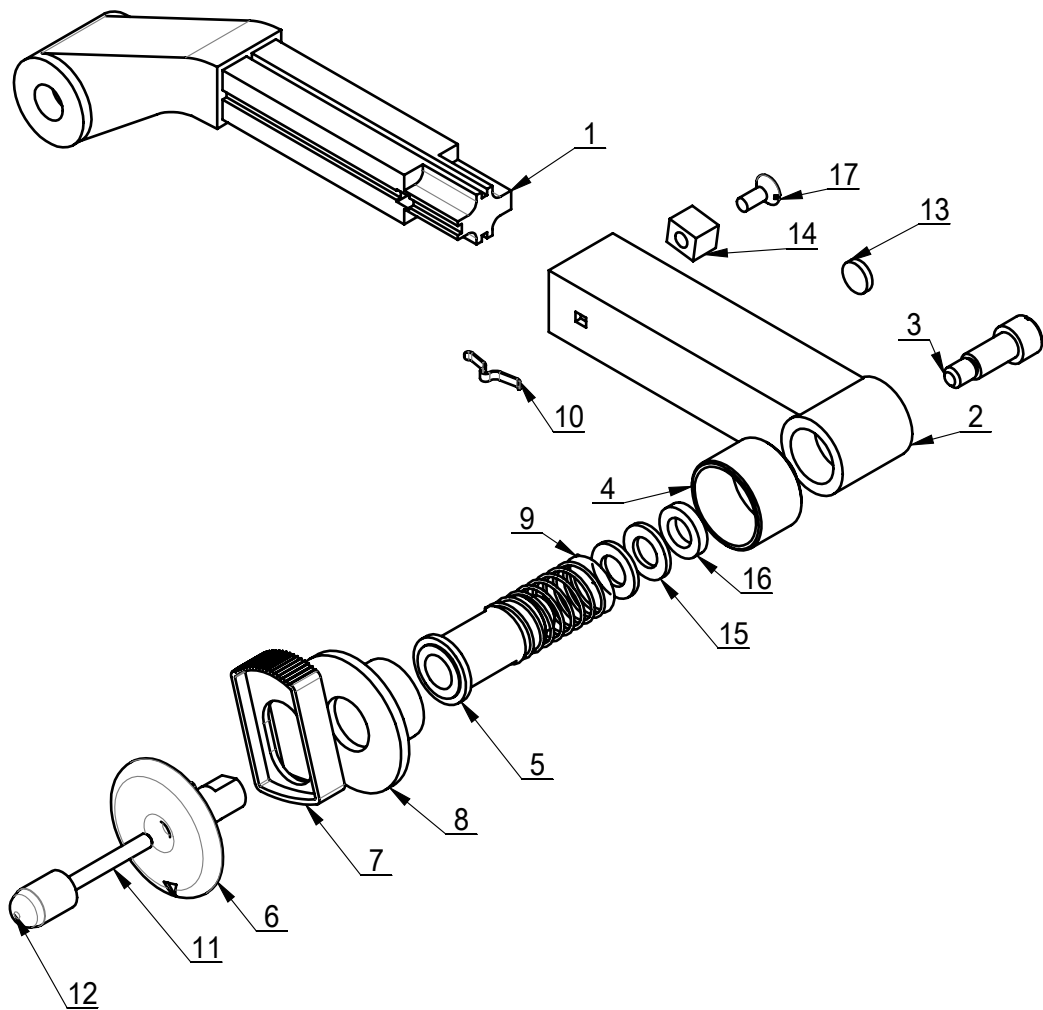
REVISION A-01

TB-L-0300000





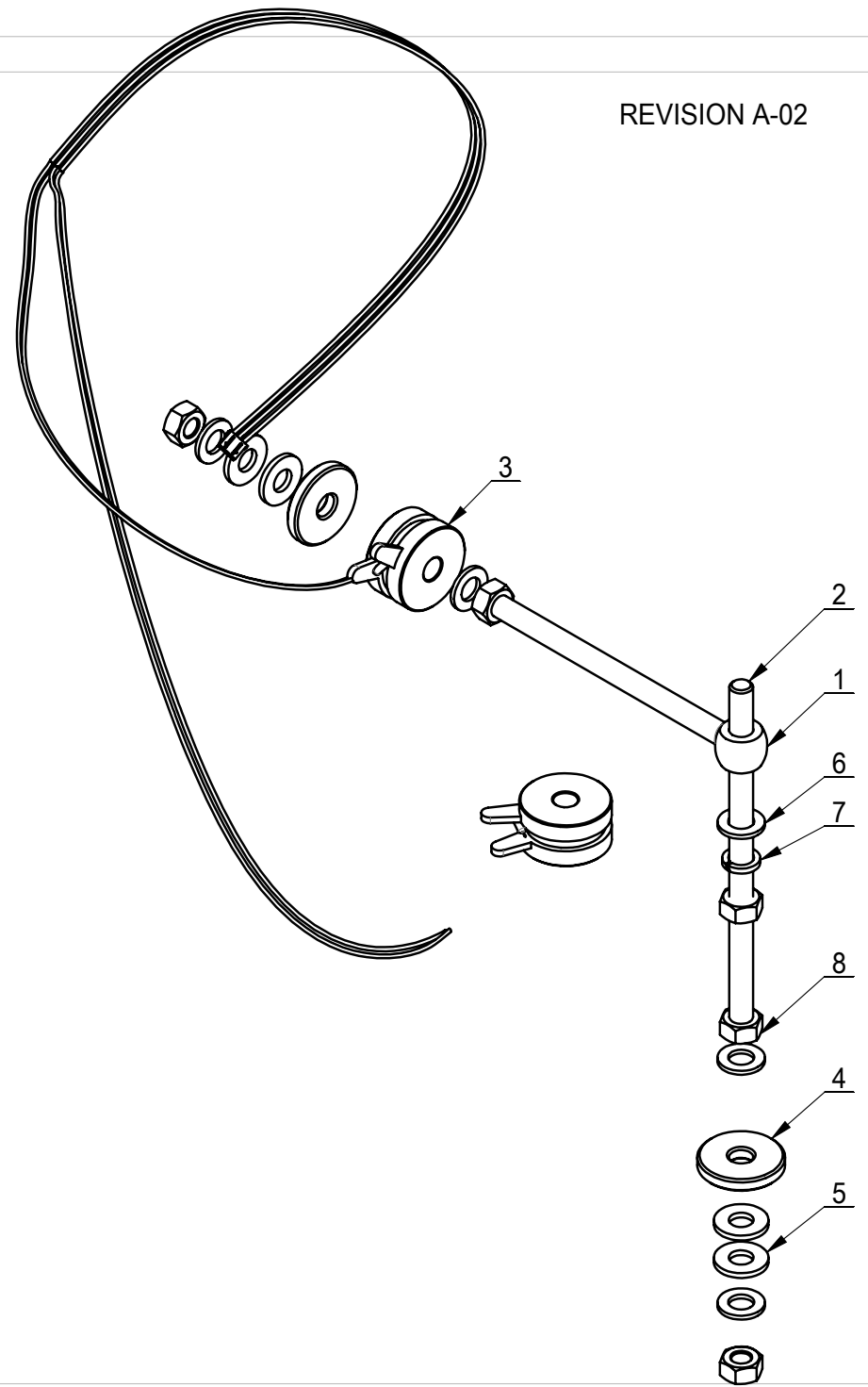
ITEM	PART.No	DESCRIPTION.	QT.Y
1	TB-L-0300001	SCALE ROD	1
2	TB-L-0300002	SCALE	1
3	TB-L-0300010	BRACKRT	1
4	TB-L-0300005	AUTOMATIC SCALE EXTENSION SPRING	1
5	TB-L-0300006	STEEL WIRE	1
6	TB-L-0300007	STEEL WIRE	1
7	TB-L-0300008	FIX PLATE	1
8	TB-L-0305000	A value varisistor assy	2
9	TB-L-0306000	D value varisistor assy	1
10	TB-L-0301000	MEASURE SCALE ASSEMBLY	1
11	TB-L-0302000	POTENTIOMETER BRACKET	1
12	TB-L-0303000	SCALE HOLDER	1
13	TB-L-0304000	ROTAION WHEEL BODY	1
14	GB73-M4×8	SLOTTED FLATTEN HEAD SET SCREW	3
15	GB70.1-M6×10	INNER HEXA CYLINDRICAL SCREW	1
16	GB70.1-M6×16	INNER HEXA CYLINDRICAL SCREW	1



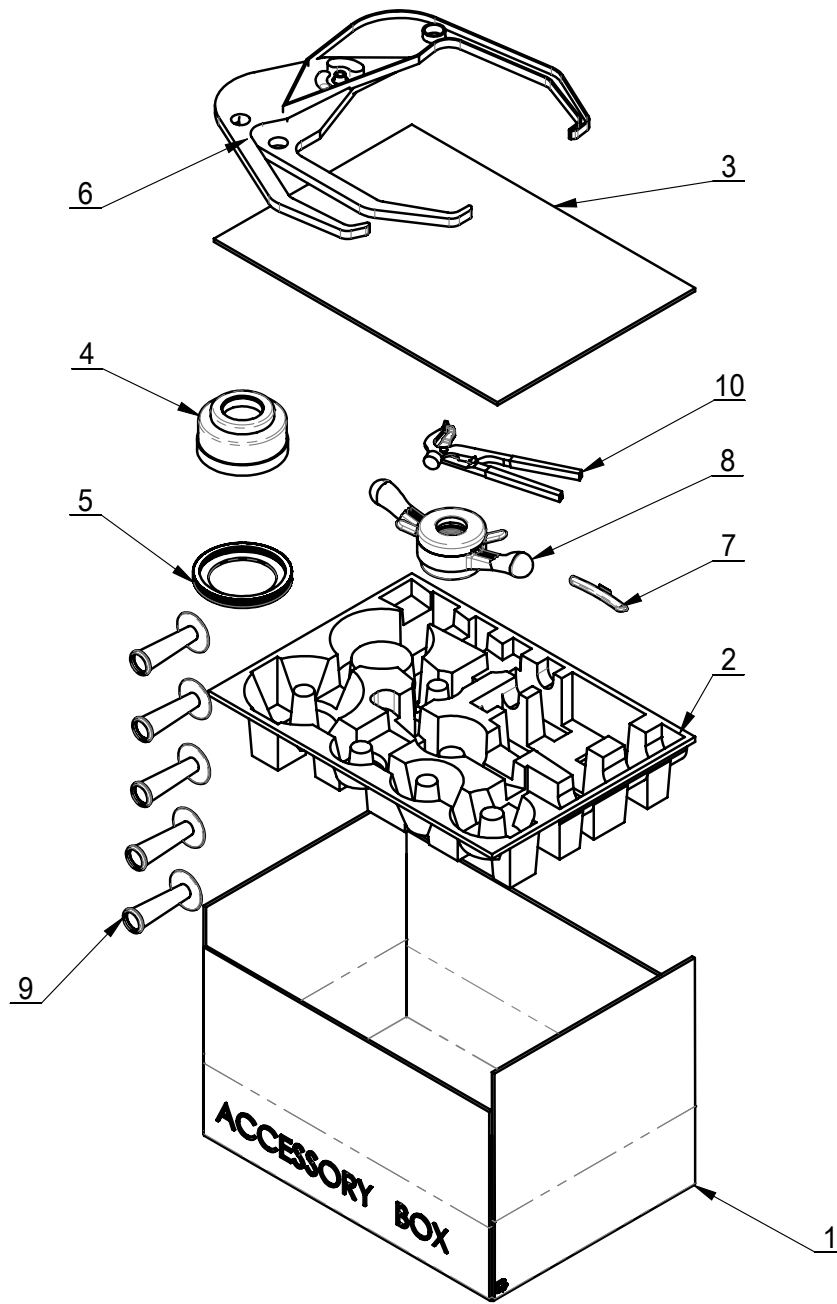
ITEM	PART.No	DESCRIPTION.	QT.Y
1	TB-L-0301001	SCALE HANDGRIP	1
2	TB-L-0301002	FLEX HANDLE	1
3	TB-L-0301003	SCREW	1
4	TB-L-0301004	ADAPTER SLEEVE	1
5	TB-L-0301005	ADAPTER SLEEVE	1
6	TB-L-0301006	SPACER SLEEVE	1
7	TB-L-0301007	COLUMN JACK	1
8	TB-L-0301008	PRESS COVER	1
9	TB-L-0301009	SPRING	1
10	TB-L-0301010	SPRING	1
11	TB-L-0301011	TELESCOPIC BUSH SCREW	1
12	TB-L-0301012	DECORATION HEAD	1
13	TB-L-0301013	MAGNET	1
14	TB-L-0301100	RETAINING BLOCK	1
15	GB95-8	FLAT WASHER	2
16	GB955-8	WAVE-FORM SPRING WASHER	1
17	GB68-M4×10	SLOTTED COUNTERSUNK SCREW	1

REVISION A-02

TB-P-0303000



ITEM	PART.No	DESCRIPTION.	QT.Y
1	TB-P-0103000	GONG RINGS BOLT	1
2	TB-P-0300005	SCREW	1
3	TB-P-0100100	PIEZO ASSEMBLY	1
4	TB-P-0100005	PRESSING WASHER	2
5	DIN 6796 - 10	SPRING PIEZO WAHSER	4
6	GB95-10	FLAT WASHER	5
7	GB93-10	STANDARD SPRING WASHER	1
8	GB6170-M10	HEXANGULAR NUT 1-TYPE	5



ITEM	PART.No	DESCRIPTION.	QT.Y
1	TB-S-0100006	ACCESSORY BOX	1
2	TB-S-0100007	TRAY	1
3	TB-S-0100008	ACCESSORY SPACE	1
4	TB-S-0100001	BOWL	1
5	TB-S-0100002	BOWL EDGE	1
6	TB-S-0100100	CALIPER ASSEMBLY	1
7	TB-S-0100003	WEIGHT(100g)	1
8	TB-K-0200000	40mm QUICK NUT	1
9	TB-S-0100009	CONE HANG HANDLE	5
10	TB-S-0100005	BALANCE HAMMAR	1